



GMT MONTHLY MEMBERSHIP PROGRESS REPORT

Results as of: 5/31/2020

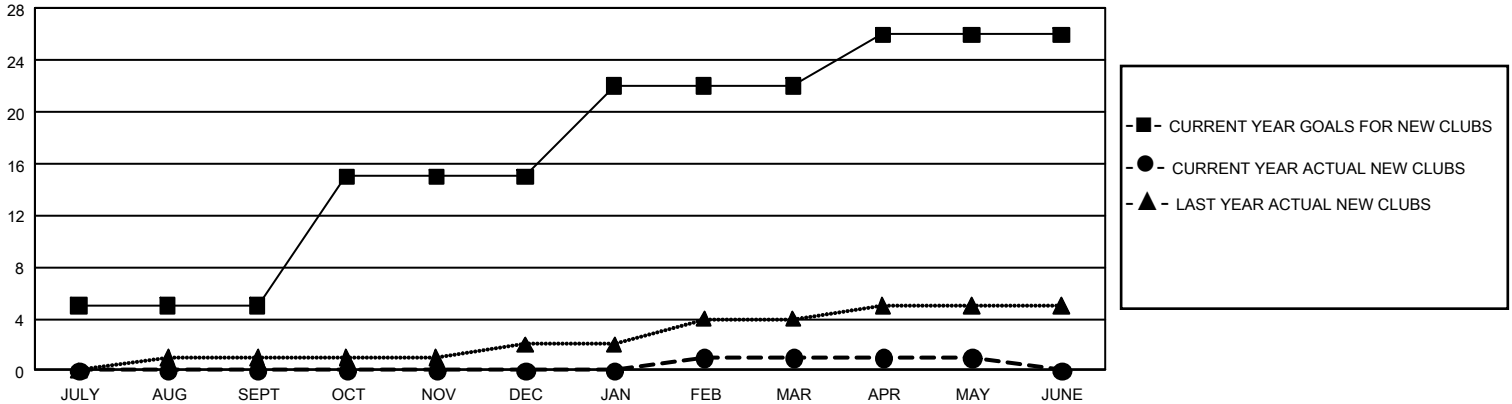
GMT Constitutional Area 5 - J, Group J

GMT: OPEN

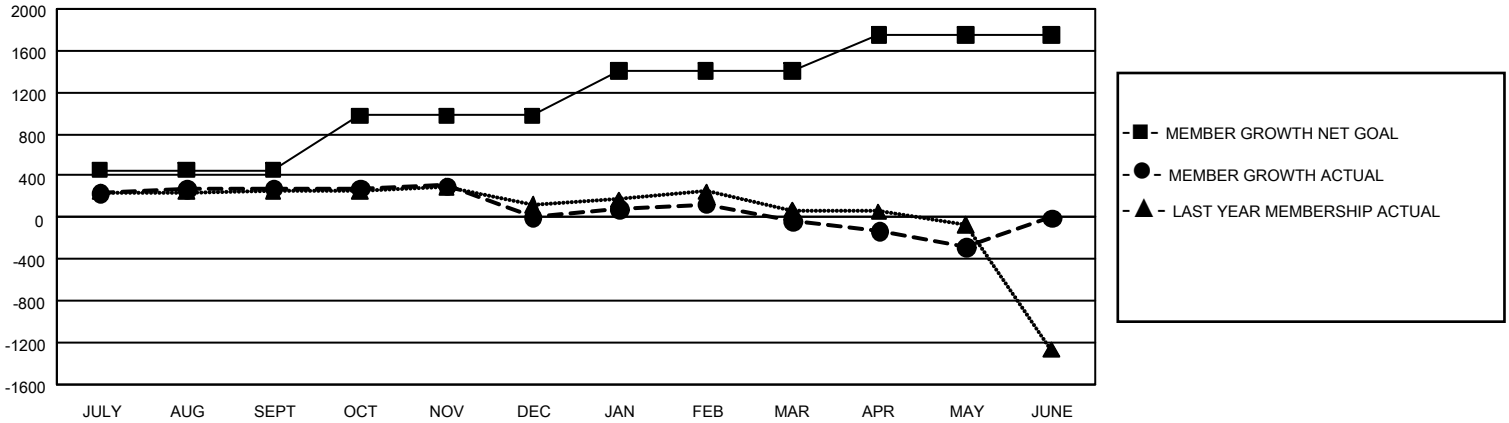
REPORT DOES NOT INCLUDE CLUBS IN UNDISTRICTED AREAS.

Clubs				Members			
RESULTS FOR 2019-2020				RESULTS FOR 2019-2020			
QUARTER	NEW CLUB GOAL	NEW CLUBS	DROPPED CLUBS	QUARTER	MEMBER GROWTH NET GOAL	MEMBER GROWTH ACTUAL	DROPPED MEMBERS ACTUAL (including transfers)
JULY/AUG/SEPT	15	0	1	JULY/AUG/SEPT	1,356	864	532
OCT/NOV/DEC	30	0	1	OCT/NOV/DEC	1,572	397	654
JAN/FEB/MAR	21	1	2	JAN/FEB/MAR	1,284	492	506
APR/MAY/JUNE	12	0	1	APR/MAY/JUNE	1,038	179	423

GOALS AND ACTUAL NEW CLUBS CUMULATIVE



GOALS AND ACTUAL MEMBERS CUMULATIVE



DROPPED CLUBS: 5	578 CLUBS OF 796 ADDED 1 OR MORE NEW MEMBERS	<u>GENDER DISTRIBUTION</u>	
<u>DROPPED MEMBERS</u>		MALE	23,373 (78.39%)
DECEASED	211	FEMALE	6,444 (21.61%)
CLUB CANCELLED	30	TOTAL FAMILY UNIT MEMBERS 8,584	
OTHER	1,874		
TOTAL	2,115		
CLICK HERE FOR CUMULATIVE MEMBERSHIP DATA			